

CHAPTER 113

CLEANING INSTRUCTIONS – LAND ROVER 110 PERENTIES 6X6 VEHICLES

- 113.1 This chapter provides basic and specific cleaning requirements for selected vehicles. Where there is a specific requirement or need to highlight particular problem areas detailed cleaning guides are provided as tables and figures in this chapter.
- 113.2 This section deals with the cleaning of the basic Land Rover 110, 6x6 vehicle. Other 6X6 vehicle variants are similar, with a specific to role module fitted to the rear of the vehicle, and some components, like batteries for the vehicle's automotive systems and for module power. The section is structured as follows:
- a. exterior of vehicle;
 - b. driver's cabin;
 - c. seatbelts;
 - d. cargo tray;
 - e. cargo tray tool boxes and stowage bays;
 - f. engine and engine compartment;
 - g. harmonic balancer;
 - h. fuel system;
 - i. transmission and drive-line;
 - j. universal joint;
 - k. chassis;
 - l. chassis frame members;
 - m. suspension;
 - n. rear suspension;
 - o. battery bay;
 - p. under-cargo tray/module compartment;
 - q. winches, and wire ropes;
 - r. tarpaulins;
 - s. camouflage nets; and
 - t. tyres (new, old and spares)

Exterior of Vehicle

113.3 The cleaning instructions for the Land Rover 6x6's exterior, as illustrated in Figure 113-1, include the points detailed in Table 113-1.



Figure 113-1: Land Rover 6x6's Exterior

Table 113-1: Cleaning Instructions for the Land Rover 6x6's Exterior

<i>Serial</i>	<i>Comments or Tasks</i>	<i>Technical Time (hours)</i>
1	Remove CES and clean.	
2	Ensure all tool bins are clean and free from dirt, dust, insect and plant material.	
3	Remove any other attachments, such as camouflage net carriers.	
4	Remove the canopy and bows and clean.	
5	Clean the hollow sections of the canopy bows by using flushing through the tubes with a pressure washer.	
6	If vehicle is fitted with a winch, remove and clean the winch rope.	
7	Clean the winch drum.	
8	Ensure winch propeller shafts, uni joints, and pillow block bearing are clean and free from dirt, dust, plant and insect material.	
9	Remove the mudflaps and clean; if damaged, dispose of.	

UNCONTROLLED IF PRINTED

113-3

<i>Serial</i>	<i>Comments or Tasks</i>	<i>Technical Time (hours)</i>
10	Remove the side flares, on the front wheel arches, for cleaning.	
11	Clean under the rubber seals on the doors, bonnet, and roof hatch and ensure no seed, soil or insect debris remains. Critically inspect all rubber seals. Any damaged rubber seals should be removed and disposed of.	
12	Remove the grill and high-pressure air or manually clean the radiator to ensure there are no seed or insect debris embedded in radiator core.	
13	Remove the radiator to facilitate cleaning. The radiator is to be high-pressure air-cleaned to remove seed and then washed down by a low-pressure water high-volume wash. Bent radiator grills may require heat treatment to burn any embedded seed material (using heat shrink guns). It may be necessary to use brushes or pick insect and seed matter out from between the veins on the radiators.	
14	Critically inspect all light assemblies. When light lenses or seals are cracked or compromised, light assemblies are to be removed and cleaned of all soil, plant or insect material.	
15	Critically inspect external rear view mirrors. Damaged mirror assemblies are to be removed and disposed of.	
16	If fitted, remove tread plates on top of front mudguards to facilitate cleaning.	0.5

Driver's Cabin

113.4 The cleaning instructions for the Land Rover 6x6's driver's cabin, as illustrated in Figure 113-2, include the points detailed in Table 113-2.



Figure 113-2: Land Rover 6x6's Driver's Cabin (Left to Right) Seating, Floor Panels and Dash

Table 113-2: Cleaning Instructions for the Land Rover 6x6's Driver's Cabin

<i>Serial</i>	<i>Comments or Tasks</i>	<i>Technical Time (hours)</i>
1	Remove floor and transmission tunnel mats. Remove floor and transmission tunnel insulation pads. Remove floor and transmission/bell housing tunnel, access panels (to facilitate cleaning and inspection of the top surfaces of the transmission and the drive shaft assemblies).	1.0 1.0
2	Remove driver and passenger seat assemblies to facilitate cleaning. Seats and bases are to be re-fitted after inspection.	1.0
3	Do not remove seatbelt assembly. Expose full length of seatbelt and clean by wiping with a dry rag.	
4	Remove the access panels under cabin seats. Pay attention to topside of fuel cell when cleaning.	
5	Remove inner door panels from both front doors.	1.0
6	Pressure wash door cavity, including the window winding mechanism, and ensure they are free from dirt, dust, seed, plant and insect material.	
7	Pressure wash window frame, channels and fillers.	
8	Critically inspect all door and window glass channels and fillers to ensure they are clean and free from dirt, dust, seed, plant and insect material. If damaged they are to be removed and disposed of.	
9	Brake and clutch pedal covers are to be removed to facilitate cleaning and then replaced after inspection.	0.2
10	The handbrake dust cover is to be removed.	0.5
11	Remove the weapon butt boxes to clean the area underneath them.	0.2
12	Remove dash pad to access ventilation/demist ducts.	4.0
13	Thoroughly clean ducts and flex tubing to remove all dust, seed, plant and insect material.	
14	Clean inside dash pad and dash wiring with compressed air.	
15	Remove upper and lower steering column shrouds and clean steering column mount with compressed air.	

Seatbelts

113.5 The cleaning instructions for the Land Rover 6x6's seatbelts, as illustrated in Figure 113-3, include the point detailed in Table 113-3.



Figure 113-3: Land Rover 6x6's Seatbelts

Table 113-3: Cleaning Instructions for the Land Rover 6x6's Seatbelts

<i>Serial</i>	<i>Comments or Tasks</i>	<i>Technical Time (hours)</i>
1	Do not remove the seatbelt assembly.	
2	Expose the entire length of each seatbelt and wipe with a dry rag.	
3	Ensure the assembly housing is free from dirt, dust, insect and plant material.	
4	Clean the inside surface of the camouflage cover with a dry rag.	
5	Remove internal body inspection panel to clean cavity behind mounted seatbelt.	

Cargo Tray

113.6 The cleaning instructions for the Land Rover 6X6's cargo tray, as illustrated in Figure 113-4, include the points detailed in Table 113-4.



Figure 113-4: Land Rover 6x6's Cargo Tray Tie-Down Rings and Seat Sockets

Table 113-4: Cleaning Instructions for the Land Rover 6x6's Cargo Tray

<i>Serial</i>	<i>Comments or Tasks</i>	<i>Technical Time (hours)</i>
1	Remove the headboard, tray sides, tailgate assembly, and the support posts, and clean thoroughly using pressure washer.	
2	Ensure the hollow sections of the support posts are thoroughly cleaned with high-pressure water.	
3	Fuel and water Jerry can carriers are to be cleaned. Straps and buckles are to be cleaned of all soil, plant and insect matter. Attention is to be paid to the loop areas of the straps, at the buckle end.	
4	Clean cargo body tray assembly with pressure washer.	
5	Ensure seat sockets and cargo tie-down ring assemblies are cleaned and free from dirt, dust, insect and plant material.	
6	If damaged or deformed, the cargo tray planks may require removal from coaming channels if foreign material cannot be flushed from between planks and cargo body frame.	3.0
7	Check around the light fitting for soil, plant and insect debris. Damaged lights, lenses or fittings are to be removed and disposed of.	
8	Remove at least one entire tail-light fitting to enable the rear cross member to be flushed out.	0.5

Cargo Tray Toolboxes and Stowage Bays

- 113.7 The toolboxes are located at the left and right rear most corners of the cargo tray, and are secured to the vehicle frame or module. Each of the toolboxes is constructed of steel and fitted with rubber seals around the door openings.
- 113.8 The specific cleaning instructions for Land Rover 6x6's toolboxes and stowage bays as illustrated in Figures 113-5 and 6-6, include those points detailed in Table 113-5.



Figure 113-5: Typical Land Rover 6x6's Cargo Tray Toolbox



Figure 113-6: Typical Land Rover 6x6's Jerry Can Stowage Bay

Table 113-5: Cleaning Instructions for the Land Rover 6x6's Cargo Tray Toolbox and Stowage Bays

<i>Serial</i>	<i>Comments or Tasks</i>	<i>Technical Time (hours)</i>
1	Remove (if required) and clean the rubber seal fitted to the toolbox door (refer Figure 6-5). Critically inspect the rubber seals and if damaged disposed of.	
2	Ensure the 'budget' key openings, in the toolbox cover, are cleaned and free from foreign material.	
3	Ensure the locking bar tube, on the inside of the door, is inspected and cleaned with pressure washer.	
4	Remove the plastic drain plugs from the underside of the toolboxes. Clean inside the toolboxes with pressure washer.	
5	Remove any jerry-cans, etc and clean individually. If fuel; drain and clean all external areas. If water; jerry-cans are to be scrubbed, and sprayed inside with chlorinated water (400 parts per million) and then allowed to air dry before inspection.	
6	Clean storage bay and framework ensuring all areas are free from BRM (refer Figure 6-6).	
7	Special attention should be paid to the open-ended box iron mount above the wheel and on the side of the stowage bay.	

Engine and Engine Compartment

113.9 The specific cleaning instructions for Land Rover 6x6's engine and engine compartment, as illustrated in Figure 113-7, include those points detailed in Table 113-6.

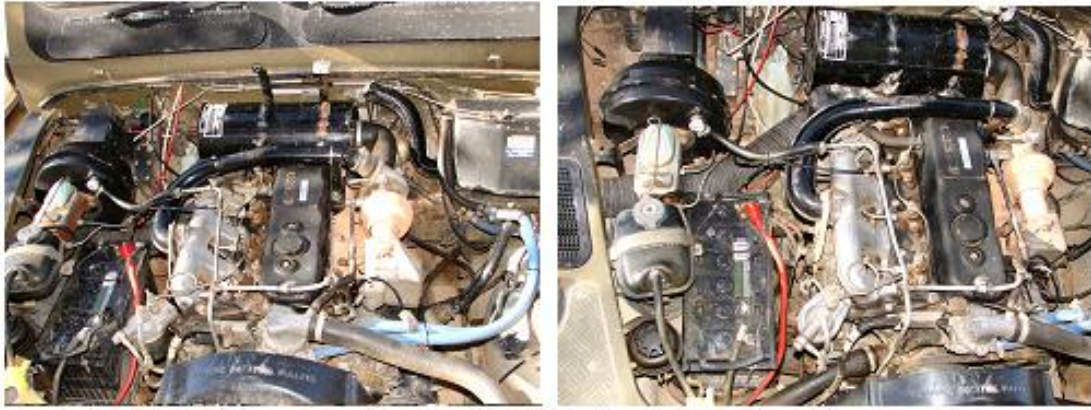


Figure 113-7: Typical Land Rover 6x6's Engine Compartment

Table 113-6: Cleaning Instructions for the Land Rover 6x6's Engine Compartment

<i>Serial</i>	<i>Comments or Tasks</i>	<i>Technical Time (hours)</i>
1	Clean the engine compartment and engine to ensure they are free of dust, built-up dirt and grease, insect and plant material.	
2	Ensure any engine openings/breathers are taped or plugged to stop ingress of water.	
3	Ensure the starter motor and alternator are covered and taped to stop ingress of water.	
4	Do not direct high-pressure water jets at any of the engine openings/breathers, or at any of the electrical/electronic components.	
5	Remove the brake booster assembly and pedal pivot housing and check to ensure the housing is free of insect or plant material.	2.0
6	Remove the clutch pedal pivot housing cover and check to ensure the housing is free of insect or plant material.	
7	Remove heater assembly and clean heater core to remove all dirt, dust, plant and insect material.	2.0
8	Clean heater/ventilation fan housing to ensure it is free from dirt, dust, plant and insect material.	
9	Remove the air cleaner flexible line from the air plenum in the right-hand front mudguard assembly and ensure it is free from insect and plant material.	0.5
10	Remove and dispose of the air cleaner element. Replace the air cleaner element with a new part.	0.5

Harmonic Balancer

113.10 The cleaning instructions for the Land Rover 6x6's harmonic balancer, as illustrated in Figure 113-8, include the point detailed in Table 113-7.

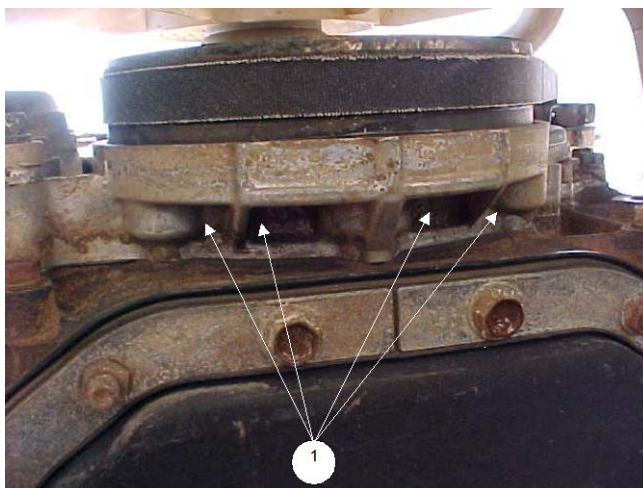


Figure 113-8: Typical Land Rover Harmonic Balancer

Table 113-7: Cleaning Instructions for the Land Rover 6x6's Harmonic Balancer

<i>Serial</i>	<i>Comments or Tasks</i>	<i>Technical Time (hours)</i>
1	Cast mouldings on the timing case, behind the harmonic balancer, collect large amounts of dirt and grease and must be thoroughly cleaned.	

Fuel System

113.11 The cleaning instructions for the Land Rover 6x6's fuel tank, as illustrated in Figure 113-9, and other fuel system components, include the points detailed in Table 113-8.



Figure 113-9: Land Rover 6x6's Fuel Tank

Table 113-8: Cleaning Instructions for the Land Rover 6x6's Fuel System

<i>Serial</i>	<i>Comments or Tasks</i>	<i>Technical Time (hours)</i>
1	The area between the fuel tank and the fuel tank skid plate, as illustrated in Figure 113-9, is difficult to clean and requires extensive flushing with water using a flexible nozzle.	
2	Ensure the cavity between the skid plate and the underside of the fuel tank is thoroughly cleaned and free from foreign material.	

UNCONTROLLED IF PRINTED

113-10

3	Clean the area on the top of both fuel tanks through the access openings in the seat base inside the cabin.	
4	Ensure the area around the fuel tank filler neck, inside the cabin vertical support and in the tank support arms is clean and free from foreign material	
5	Ensure the upper surfaces, particularly the blind hole cast in the top of the fuel sedimenters, are clean and free from foreign material.	

Transmission and Drive-line Components

113.12 The cleaning instructions for the Land Rover 6x6's transmission, as illustrated in Figure 113-10, include the points detailed in Table 113-9.

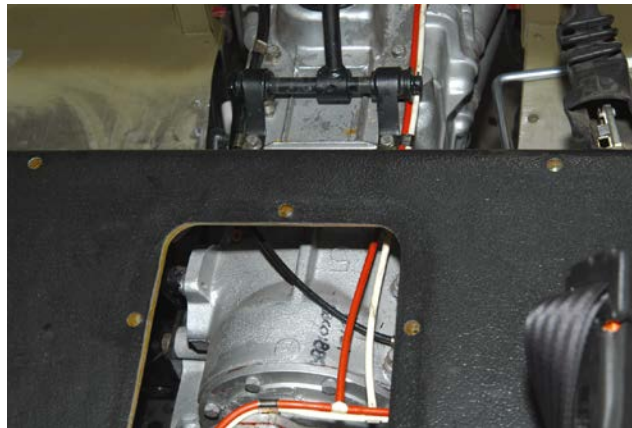


Figure 113-10: Land Rover 6x6's Transmission (Top View)

Table 113-9: Cleaning Instructions for the Land Rover 6x6's Transmission

<i>Serial</i>	<i>Comments or Tasks</i>	<i>Technical Time (hours)</i>
1	Clean all side of the transmission and transfer case assembly. Care must be taken to thoroughly remove all grease and dirt from the transmission top as seeds collect in this area.	
2	Ensure the cavities formed in top of the casting of the extension housing from the third differential to the front axle propeller shaft, in the area around the vacuum switch, are clean and free from dirt, dust, insect and plant material.	

Universal Joint

113.13 The cleaning instructions for the Land Rover 6x6's universal joints, as illustrated in Figure 113-11, include the point detailed in Table 113-10.



Figure 113-11: Land Rover 6x6's Universal Joints

Table 113-10: Cleaning Instructions for the Land Rover 6x6's Universal Joints

<i>Serial</i>	<i>Comments or Tasks</i>	<i>Technical Time (hours)</i>
1	Remove all grease that may accumulate on the universal joints as it may collect soil, plant and insect debris.	

Chassis

113.14 The cleaning instructions for the Land Rover 6x6's chassis, as illustrated in Figure 113-12, include the points detailed in Table 113-11.

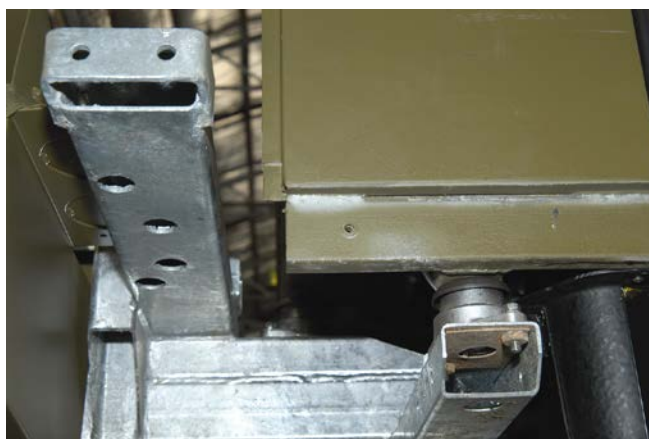


Figure 113-12: Land Rover 6x6's Chassis

Table 113-11: Cleaning Instructions for the Land Rover 6x6's Chassis

<i>Serial</i>	<i>Comments or Tasks</i>	<i>Technical Time (hours)</i>
1	Many of the chassis members are formed from rectangular hollow section galvanised steel. Some have drillings that allow foreign material to collect inside the chassis member. Flush through the chassis components until clear water is seen exiting.	

Chassis Frame Members

113.15 The cleaning instructions for the Land Rover 6x6's chassis frame members, as illustrated in Figure 113-13, include the point detailed in Table 113-12.



Figure 113-13: Land Rover 6x6's Rear Cross Members

Table 113-12: Cleaning Instructions for the Land Rover 6x6's Chassis Frame Members

<i>Serial</i>	<i>Comments or Tasks</i>	<i>Technical Time (hours)</i>
1	Clean the hollow cross members, located above the intermediate and rear axle assemblies, adjacent to the shock absorber and rebound cable mounts, by using pressure washer. Flush through until clear water is seen exiting.	

Suspension

113.16 The cleaning instructions for the Land Rover 6x6's front coil springs, as illustrated in Figure 113-14, include the information detailed in Table 113-13.



Figure 113-13: Land Rover 6x6's Front Coil Springs

Table 113-14: Cleaning Instructions for the Land Rover 6x6's Front Coil Springs

<i>Serial</i>	<i>Comments or Tasks</i>	<i>Technical Time (hours)</i>
1	Mud and other debris collect in the spring seat, where the spring is	

	mounted to the axle assembly, and are difficult to remove from the base of the rear springs. Ensure that this area is cleaned well.	
--	--	--

Rear Suspension

113.17 The cleaning instructions for the Land Rover 6x6's rear suspension, as illustrated in Figure 113-15, include the information detailed in Table 113-14.



Figure 113-15: Land Rover 6x6's Rear Suspension

Table 113-14: Cleaning Instructions for the Land Rover 6x6's Rear Suspension

<i>Serial</i>	<i>Comments or Tasks</i>	<i>Technical Time (hours)</i>
1	Ensure rear suspension rocker beam mounts on chassis are clean and free of soil, plant and insect material.	

Battery Bay

113.18 The cleaning instructions for Land Rover 6x6's battery bay, as illustrated in Figure 113-16, include the points detailed in Table 6-15.



Figure 113-16: Land Rover 6x6's Batter Bay

Table 6-15: Aircraft Loading Machinery's Battery Bay

<i>Serial</i>	<i>Comments or Tasks</i>	<i>Technical Time (hours)</i>
1	Remove the batteries from the vehicle and clean.	
2	Clean the battery boxes and cradles and ensure they are free of dirt, dust, plant and insect material.	
3	Where possible/practical re-fit batteries after inspected by DA.	

Under Cargo Tray/Module Compartment

113.19 Some variants have an under-cargo tray/module compartment located at the rear of the tray. The compartment may or may not be fitted with a door opening. An example of a compartment is illustrated in Figure 113-17 with the method for cleaning detailed in Table 113-16.



Figure 113-17: Typical Land Rover 6x6's Under Cargo Tray Compartment

Table 113-16: Cleaning Instructions for the Land Rover 6x6's Cargo Tray Toolbox

<i>Serial</i>	<i>Comments or Tasks</i>	<i>Technical Time (hours)</i>
1	Remove (if required) and clean the rubber seal fitted to the compartment door. Critically inspect the rubber seals and if damaged dispose of.	
2	Ensure the 'budget' key openings, in the compartment cover, are cleaned and free from foreign material.	
3	Ensure the locking bar tube, on the inside of the door, is inspected and cleaned with pressure washer.	
4	Remove the plastic drain plugs from the underside of the compartment (if fitted). Clean inside the compartment with pressure washer.	

Winches and Wire Ropes

113.20 The cleaning instructions for winches and wire ropes, as illustrated in Figure 113-18, include the point detailed in Table 113-17.



Figure 6-18: Land Rover 6x6's Winch Assembly

Table 113-17: Cleaning Instructions for Land Rover 6x6's Winches and Wire Ropes

<i>Serial</i>	<i>Comments or Tasks</i>	<i>Technical Time (hours)</i>
1	All items are to be extended to full length and subject to a high-pressure water clean using degreaser, if required, to remove all soil, plant and insect matter	
2	The winch drum is also to be degreased and subject to a high-pressure water clean	
3	All winch ropes and wire ropes are to be re-oiled after inspection. An application of a protective covering (plastic bag) may be required to protect the refurbished ropes and cables	

Tarpaulins

113.21 The cleaning instructions for the tarpaulins include the points detailed in Table 6-18.

Table 113-18: Cleaning Instructions for Tarpaulins

<i>Serial</i>	<i>Comments or Tasks</i>	<i>Technical Time (hours)</i>
1	All tarpaulins are to be given a brush down, brush scrubbing and hose cleaning, paying particular attention to the seam areas and then hung so as not to contact the ground for drying	
2	All ropes and universal dispatch straps are to be extended to their full length and wiped or washed clean of all soil, plant and insect matter Attention to attachment points and fixtures and tension devices is required Personnel are to inspect and remove all twigs, foliage, and so on that has become embedded in the rope fibres	
3	Velcro panels and seams (where fitted) are to be brushed and washed to ensure all seed, plant and soil material is removed	
4	Canvas bags are to be turned inside out and checked for burrs, seeds and insects;	
5	Where fitted, poles, knuckles and pegs are to be subject to a high-pressure water clean to remove all soil, plant and insect matter (ants, spiders and mud wasps are of particular concern)	

UNCONTROLLED IF PRINTED

113-16

<i>Serial</i>	<i>Comments or Tasks</i>	<i>Technical Time (hours)</i>
6	If tarpaulins have not been used during the entire deployment, then the requirement is for all tarpaulins to be unrolled, brushed and swept clean to ensure no vermin or insect infestation and then subject to inspection	

Camouflage Nets

113.22 The cleaning instructions for camouflage nets include the points detailed in Table 6-19.

Table 113-19: Cleaning Instructions for Camouflage Nets

<i>Serial</i>	<i>Comments or Tasks</i>	<i>Technical Time (hours)</i>
1	Removal of grass and debris may be achieved by use of a petrol powered blower/vacuum in the first instance, use of water should be avoided.	
2	Heavily soiled camouflage nets may require further scrubbing and a dip in an approved detergent/ disinfectant (one in 20 solution). This has been achieved in the past by using trailers with required additive.	
3	Depending on the degree of contamination and diligence in the cleaning process, camouflage nets may require three or more trailer dips to achieve the required DA clearance.	
4	Drying is to be achieved by hanging the camouflage net so that it does not come into contact with the ground.	
5	Nets are to be inspected to ensure that all plant material is removed.	
6	Camouflage poles are to be brushed or swept clean; and metal joiners are to be removed, cleaned and inspected.	

Tyres (New, Old and Spares)

113.23 The cleaning instructions for Tyres (new, old and spares) include the points detailed in Table 6-20.

Table 113-20: Cleaning Instructions for Tyres (New, Old and Spares)

<i>Serial</i>	<i>Comments or Tasks</i>	<i>Technical Time (hours)</i>
1	All tyres are to be washed and scrubbed to remove all BRM.	
2	Damaged tyres are to be inspected and their suitability for return to Australia determined. If necessary, damaged tyres (for example, perished, cracked or split) are to be removed and disposed of in accordance with the tyre disposal policy.	
3	Cracked tyres have the risk of containing BRM therefore perished tyres are to be subject to disposal.	
4	All tyres are to be treated with an approved residual insecticide after cleaning.	
5	Fitted tyres that are damaged should be replaced with new tyres.	
6	Used and fitted tyres on rims are to be individually verified that the tyres are on rims, inflated with beading sealed and that the tyres are clean,	

UNCONTROLLED IF PRINTED

113-17

<i>Serial</i>	<i>Comments or Tasks</i>	<i>Technical Time (hours)</i>
	free of water and other BRM.	
7	Tyres that are not fitted to rims are to be stored in such a manner that water cannot collect inside the tyre. The preferred DA solution is that tyres are stored within containers. Tyres not fitted on rims will require fumigation on return to Australia.	
8	DA considers a Non-Commercial consignment of tyres to contain a maximum of 8 tyres (inclusive of the wheels on the vehicle) and may be imported with an accompanying vehicle. If tyres are to be transported back to Australia in containers or crates, please refer to the DA BICON (Biosecurity Import Conditions system) internet site (http://www.agriculture.gov.au/import/online-services/bicon) for the commodity "tyres"	

Annexes:

- A. Cleaning Instructions – Ambulance
- B. Cleaning Instructions – Communications Control Assemblage (CCA)
- C. Cleaning Instructions – Electronic Repair Vehicle
- D. Cleaning Instructions – General Maintenance Vehicle
- E. Cleaning Instructions – SATCOM Terminal Assemblage (Parakeet) (STA)
- F. Cleaning Instructions – Radio Relay Assemblage (RRA)
- G. Cleaning Instructions – SAS Long Range Patrol Vehicle
- H. Cleaning Instructions – Personnel Carrier Variant
- I. Cleaning Instructions – RAAF Communications Variant
- J. Cleaning Instructions – Assault Pioneer Variant
- K. Cleaning Instructions – Circuit Switch Assemblage (CSA)
- L. Cleaning Instructions – Truck Mortar Variant
- M. Cleaning Instructions – Artillery Safety Variant
- N. Cleaning Instructions – Crew-cab Variant
- O. Cleaning Instructions – Infantry Mobility Variant
- P. Cleaning Instructions – Direct Fire Weapons Variant
- Q. Cleaning Instructions – Fit For Radio (FFR) Variant
- R. Cleaning Checklist - Land Rover 110 GS 6x6 Vehicles

UNCONTROLLED IF PRINTED

113-18

This Page Intentionally Blank

ANNEX A TO CHAPTER 113

CLEANING INSTRUCTIONS – AMBULANCE

1. This annex provides specific cleaning requirements for selected vehicles. Where there is a specific requirement or need to highlight particular problem areas detailed cleaning guides are provided as tables and figures in this annex.
2. The cleaning requirements that follow are in addition to those points for the Landrover 110 vehicles that are included in this section.

Ambulance Cleaning Instructions

3. The cleaning instructions for the Ambulance Module, as illustrated in Figures 113A-1 to 113A-3, include the points detailed in Table 113A-1.



Figure 113A-1: Ambulance External



Figure 113A-2: Ambulance Rear



Figure 113A-3: Ambulance Interior

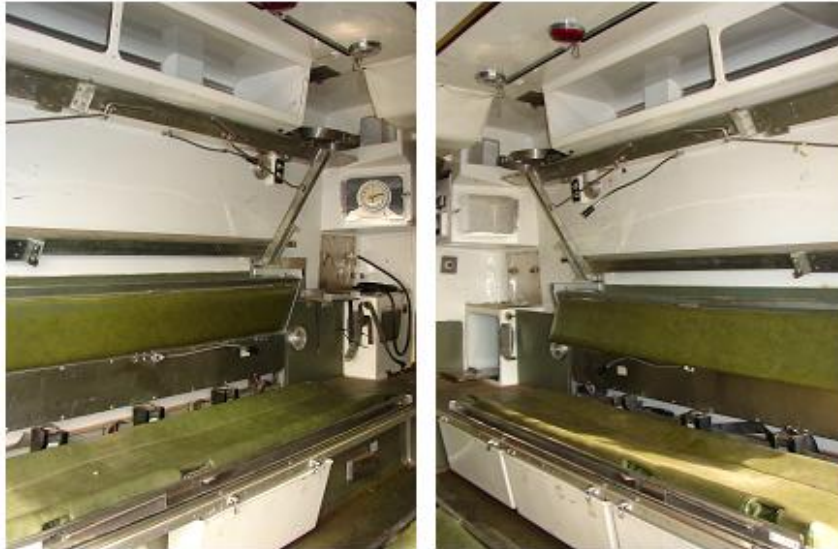


Figure 113A-4: Ambulance Interior Passenger Side (Left) and Drivers Side (Right)



Figure 113A-5: Ambulance Battery Bay

UNCONTROLLED IF PRINTED

113A - 3

Table 113A-1: Cleaning Instructions for Ambulance

<i>Serial</i>	<i>Comments or Tasks</i>	<i>Technical Time (hours)</i>
1	Remove all CES and individually clean. Where possible/practical do not refit until after DA inspection of the vehicle.	
2	Critically inspect all rubber dust and weather seals on module side and rear doors to ensure they are not damaged in any way. Any damaged seals should be disposed of.	
3	Remove the vinyl weather strips on the underside of the side access door hinges (if fitted) to ensure the hinge and inside of weather strip are clean and free from foreign material.	
4	Remove all light lenses and covers on and inside the module to ensure there is no seed, soil or insect debris. Dispose of damaged lights and lenses.	
5	Remove cushions from the bench-seats in the rear of the cabin and inspect and clean (refer Figures 113A-3 and 113A-4). Damaged seat cushions are to be disposed of.	
6	Clean bare seat benches and extension arms.	
7	Clean bench-seat tie up straps and ensure they are free of BRM.	
8	All stowage compartments, toolboxes and bins are to be emptied and brushed, air-blown and wiped clean. All rubber seals are to be checked and cleaned.	
9	Clean ceiling, floor and the rear of front seat.	
10	Clean inside hollow rubber seal sections around the module step well, with water and compressed air. Flush support rib steel tubing on face of step	
11	Clean under the rubber dust and weather seals (remove if required) on the module toolboxes and ensure there is no seed, soil or insect material. Critically inspect the rubber dust and weather seals to ensure they are not damaged in any way. Any damaged seals should be disposed of.	
12	Remove batteries (refer Figure 113A-5). Ensure battery compartment, battery frames, battery leads and terminals are clean and free from foreign material. Once inspected, and cleared, replace batteries.	
13	Refer to Chapter 113 for detailed cleaning guidelines.	

ANNEX B TO CHAPTER 113

CLEANING INSTRUCTIONS – COMMUNICATIONS CONTROL

ASSEMBLAGE

1. This annex provides specific cleaning requirements for selected vehicles. Where there is a specific requirement or need to highlight particular problem areas detailed cleaning guides are provided as tables and figures in this annex.
2. The cleaning instructions for the Communications Control Assemblage, as illustrated in Figure 113B-1, include the points detailed in Table 113B-1.



Figure 113B-1: Communications Control Assemblage

Table 113B-1: Cleaning Instructions for the Communications Control Assemblage

EXTREME CAUTION
ELECTRICAL COMPONENTS

Do not use water or steam to clean any interiors areas of the Communications Control Assemblage's electrical compartments – Use air clean only and only under the supervision of a qualified technician.

Serial	Comments or Tasks	Technical Time (hours)
1	The pallet is to be removed from the parent vehicle to facilitate cleaning and inspection.	
2	Ensure forklift pockets, in the base of the shelter, are cleaned and free of dirt, dust, plant and insect material.	
3	The top is to be raised and the canvas cleaned as for tentage. Poles	

UNCONTROLLED IF PRINTED

113B - 2

<i>Serial</i>	<i>Comments or Tasks</i>	<i>Technical Time (hours)</i>
	are to be wiped clean and the fold down area is to be cleaned of all soil, plant and insect material.	
4	All access panels are to be opened or removed to facilitate cleaning and inspection.	
	Electronic equipment is to be dismounted to facilitate cleaning.	
5	Internal electronics are to be vacuumed, air-blown and brushed clean. Internal mounting racks that are fixed to the floor are to be moved to facilitate cleaning and inspection.	
6	Air-conditioning and ventilation systems are to have filters removed and the radiator fins air-blown clean. Ventilation systems are to be air-blown with high-pressure air.	
7	Refer to Chapter 113 for detailed cleaning guidelines.	

ANNEX C TO CHAPTER 113

CLEANING INSTRUCTIONS – ELECTRONIC REPAIR MODULE

1. This annex provides specific cleaning requirements for selected vehicles. Where there is a specific requirement or need to highlight particular problem areas detailed cleaning guides are provided as tables and figures in this annex.
2. The cleaning requirements for the Electronic Repair Vehicle that follow are in addition to those points for the Landrover 110 vehicles included in Chapter 113.

Repair Module Cleaning Instructions

3. The cleaning instructions for the Electronic Repair Vehicle's Module, as illustrated in Figures 113C-1 to 113C-9, include the points detailed in Table 113C-1.



Figure 113C-1: Electronic Repair Vehicle with Repair Module



Figure 113C-2: Electronic Repair Vehicle Rear and Rear Door Opened



Figure 113C-3: Electronic Repair Vehicle Rear Interior



Figure 113C-4: Electronic Repair Vehicle Interior Cabinets



Figure 113C-5: Electronic Repair Vehicle Interior Storage Bins



Figure 113C-6: Electronic Repair Vehicle Air-conditioner



Figure 113C-7: Electronic Repair Vehicle External Air-conditioner Vent

Table 113C-1: Cleaning Instructions for Electronic Repair Vehicle

<i>Serial</i>	<i>Comments or Tasks</i>	<i>Technical Time (hours)</i>
1	Remove and clean all CES, workshop tools and test equipment from the module.	
2	Remove all shelving and cupboard frames and clean individual drawers and frames (refer Figures 113C-3 to 113C-5). Ensure there is no seed, soil or insect debris. Remove floor panels underneath cupboards and frames. Remove dirt, dust, seed, and plant material that may collect at the point where the floor panel meets the support members of the module.	
3	Clean under the rubber dust and weather seal, on the module toolboxes and storage cabinets (refer Figures 113C-3 to 113C-5) on the right and left-hand sides at the rear of the module, and ensure there is no seed, soil or insect material. Ensure the 'budget' key opening is clean and free from foreign	

UNCONTROLLED IF PRINTED

113C - 4

<i>Serial</i>	<i>Comments or Tasks</i>	<i>Technical Time (hours)</i>
	<p>material.</p> <p>Clean the locking bar channel inside the door with water from the pressure washer.</p> <p>Critically inspect the rubber dust and weather seals to ensure they are not damaged in any way. Any damaged seals should be disposed of.</p>	
4	<p>Remove module aluminium checker plate floor.</p> <p>Inspect and where required due to damage dispose of wooden floor supports, under the checker plate floor panel. Timber/ checker plate assemblies may need to be isolated to facilitate fumigation action and may not be returned to parent vehicle</p> <p>Clean area underneath floor panel to ensure there is no seed, soil or insect debris.</p>	
5	<p>Critically inspect all rubber dust and weather seals on module to ensure they are not damaged in any way. Any damaged seals should be disposed of.</p> <p>Clean under the rubber seals on the door, step, and other openings to ensure there is no seed, soil or insect material.</p> <p>Open module external power access cover on the rear right-hand corner of the module. Clean the hinge and general power outlets and ensure no foreign material remains.</p>	
6	<p>Remove air-conditioning duct facia and clean outlet using compressed air, or by vacuuming (refer Figures 113C-6 and 113C-7).</p>	
7	<p>Clean inside the hollow rubber seal section around the module door and step with water and compressed air (refer Figure 113C-8).</p>	
8	<p>Ensure rear suspension rocker beam mounts (refer Figure 113C-9) on chassis are clean and free of soil, plant and insect material.</p>	
9	<p>Refer to Chapter 113 for detailed cleaning guidelines.</p>	



Figure 113C-8: Typical Module Step Well Seal



Figure 113C–9: Electronic Repair Vehicle Suspension Rockers

ANNEX D TO CHAPTER 113

CLEANING INSTRUCTIONS – GENERAL MAINTENANCE

MODULES

1. This annex provides specific cleaning requirements for selected vehicles. Where there is a specific requirement or need to highlight particular problem areas detailed cleaning guides are provided as tables and figures in this annex.
2. The cleaning requirements that follow are in addition to those points for the Landrover 110 vehicles that are included in Chapter 113.

Repair Module Cleaning Instructions

3. The cleaning instructions for the General Maintenance Vehicle's Repair Module, as illustrated in Figure 113D–1 to 113D–8, include the points detailed in Table 113D–1.



Figure 113D–1: General Maintenance Vehicle with Repair Module



Figure 113D-2: General Maintenance Vehicle Repair Module Interior



Figure 113D-3: General Maintenance Vehicle Repair Module Interior Passenger Side



Figure 113D-4: General Maintenance Vehicle Repair Module Interior Driver Side



Figure 113D–5: General Maintenance Vehicle Repair Module Interior Lights

Table 113D–1: Cleaning Instructions for General Maintenance Vehicle Repair Module

<i>Serial</i>	<i>Comments or Tasks</i>	<i>Technical Time (hours)</i>
1	Remove all CES, and workshop tools and equipment from the module.	
2	Remove all shelving and cupboard frames to ensure there is no seed, soil or insect debris (refer to Figures 113D-2 to 113D-4).	
3	Remove all light lenses and covers on and inside the module to ensure there is no seed, soil or insect debris (refer to Figures 113D-5). Dispose of damaged lights and lenses.	
4	Remove floor panels underneath cupboards. Remove dirt, dust, seed, and plant material that may collect at the point where the floor panel meets the support members of the module	
5	Remove module aluminium checker plate floor.	
6	Inspect and where required due to damage, dispose of wooden floor supports, under the checker plate floor panel. Timber/ checker plate assemblies may need to be isolated to facilitate fumigation action and may not be returned to parent vehicle.	
7	Clean area underneath floor panel to ensure there is no dirt, dust, seed, and plant material.	
8	Critically inspect all rubber dust and weather seals on module side and rear doors to ensure they are not damaged in any way (refer Figure 113D-6). Any damaged seals should be disposed of.	
9	Remove the vinyl weather strips on the underside of the side access door hinges to ensure the hinge and inside of weather strip are clean and free from foreign material.	
10	Open module external power access cover on the rear, right-hand side of the module. Clean the hinge and general power outlets to ensure no foreign material remains.	
11	Clean inside hollow rubber seal sections around the module step well, with water and compressed air.	
12	Flush support rib steel tubing on face of step	
13	Clean under the rubber dust and weather seals (remove if required) on the module toolboxes, on the right and left-hand sides at the rear of the	

UNCONTROLLED IF PRINTED

113D - 4

<i>Serial</i>	<i>Comments or Tasks</i>	<i>Technical Time (hours)</i>
	module, and ensure there is no seed, soil or insect material (refer Figure 113D-7 and 113D-8).	
14	Critically inspect the rubber dust and weather seals to ensure they are not damaged in any way. Any damaged seals should be disposed of.	
15	Refer to Chapter 113 for detailed cleaning guidelines	



Figure 113D-6: General Maintenance Vehicle Side Panel Door



Figure 113D-7: General Maintenance Vehicle Side Access Dust and Weather Seals, and Work Lights



Figure 113D–8: General Maintenance Vehicle Dust, Weather Seals, and Blackout Curtain

ANNEX E TO CHAPTER 113

CLEANING INSTRUCTIONS – SATCOM TERMINAL ASSEMBLAGE (PARAKEET) VARIANT

1. This annex provides specific cleaning requirements for selected vehicles. Where there is a specific requirement or need to highlight particular problem areas detailed cleaning guides are provided as tables and figures in this annex.
2. The cleaning requirements that follow are in addition to those points for the Landrover 110 vehicles that are included in Chapter 113.

External Areas Cleaning Instructions

3. The cleaning instructions for the SATCOM Terminal Assemblage (Parakeet), as illustrated in Figures 113E-1 to 113E-3, include the points detailed in Table 113E-1.



Figure 113E-1: Landrover 6X6 SATCOM Terminal Assemblage (Parakeet)



Figure 113E-2: Landrover 6X6 SATCOM Terminal Assemblage (Parakeet) Packed



Figure 113E-3: Landrover 6X6 SATCOM Terminal Assemblage (Parakeet) Electronic Compartments

Table 113E-1: Cleaning Instructions for the SATCOM Terminal Assemblage (Parakeet)

**EXTREME CAUTION
ELECTRICAL COMPONENTS**

Do not use water or steam to clean any interiors areas of the SATCOM Terminal Assemblage's (Parakeet) electrical compartments – Use air clean only and only under the supervision of a qualified technician.

<i>Serial</i>	<i>Comments or Tasks</i>	<i>Technical Time (hours)</i>
1	Remove the pallet from parent vehicle to facilitate cleaning and inspection. Pallet is to be fogged with insect knock down after inspection and sealed.	
2	The dish is to be cleaned down with water to remove all soil, plant and insect matter. Attention is to be paid to small areas where foliage, seeds and insect material can become lodged.	
3	Do not use water or steam to clean any interiors areas of the SATCOM Terminal Assemblage's (Parakeet) electrical compartments – Use air clean only and only under the supervision of a qualified technician	
4	Electronic equipment is to be air-hose cleaned and brushed down with brushes to remove soil and insect debris. Filters are to be removed and cleaned where fitted. All cables are to be unwound and wiped down, paying attention to connectors. Mounting frames that are fixed to the floor are to be moved to facilitate cleaning and inspection. Equipment is to be dismounted to facilitate cleaning.	
5	All multi-pair cable is to be wiped clean over the entire length including connectors. Conduit is to be cleaned by a high-pressure water clean or removed to facilitate inspection by DA.	
6	Refer to Chapter 113 for detailed cleaning guidelines.	

Supports and Stands

4. The cleaning instructions for the SATCOM Terminal Assemblage (Parakeet) supports and stands, as illustrated in Figure 113E-4 include the points detailed in Table 113E-2.



Figure 113E–4: Landrover 6X6 SATCOM Terminal Assemblage (Parakeet) Supports and Stands

Table 113E–2: Cleaning Instructions for the SATCOM Terminal Assemblage (Parakeet) Supports and Stands

<i>Serial</i>	<i>Comments or Tasks</i>	<i>Technical Time (hours)</i>
1	Attachment points and frames are to be cleaned, and attention is to be paid to the hollow tube areas.	
2	Supports are to be cleaned with a high-pressure water cleaner.	
3	Stands are to be removed and subject to high-pressure water cleaner, paying attention to the threaded area.	
4	Special attention is to be paid to the foot plates which are to be with a high-pressure water cleaner.	
5	Forklift pockets, in the base of the shelter, are to be cleaned and free of dirt, dust, plant and insect material.	
6	Refer to Chapter 113 for detailed cleaning guidelines.	

ANNEX F TO CHAPTER 113

CLEANING INSTRUCTIONS – RADIO RELAY ASSEMBLAGE

1. This annex provides specific cleaning requirements for selected vehicles. Where there is a specific requirement or need to highlight particular problem areas detailed cleaning guides are provided as tables and figures in this annex.
2. The cleaning requirements that follow are in addition to those points for the Landrover 110 vehicles that are included in Chapter 113.

Radio Relay Assemblage Cleaning Instructions

3. The cleaning instructions for the Radio Relay Assemblage, as illustrated in Figures 113F–1 to 113F–5, include the points detailed in Table 113F–1.



Figure 113F–1: Radio Relay Assemblage with Antenna Erected



Figure 113F-2: Radio Relay Assemblage



Figure 113F-3: Radio Relay Assemblage Rear



Figure 113F-4: Radio Relay Assemblage Side Covers Open



Figure 113F-5: Radio Relay Assemblage Antennae Storage Area

EXTREME CAUTION
ELECTRICAL COMPONENTS

Do not use water or steam to clean any interiors areas of the Radio Relay Assemblage's electrical compartments – Clean only under the supervision of a qualified technician.

Table 113F-1: Cleaning Instructions for the Radio Relay Assemblage

Serial	Comments or Tasks	Technical Time (hours)
1	The pallet is to be removed from the parent vehicle to facilitate cleaning and inspection. Ensure forklift pockets, in the base of the shelter, are cleaned and free of dirt, dust, plant and insect material.	
2	Antenna masts are to be fully extended. Guy lines and ropes are to be wiped clean to ensure they are free of all plant and insect matter. Antenna heads are to be washed down to remove all soil, plant and insect matter (Refer Figures 113F-1 and 113F-5).	
3	Electronic components: Do not use water or steam to clean any interiors areas of the Radio Relay Assemblage's electrical compartments – Clean only under the supervision of a qualified technician	
	Mounting frames fixed to the floor are to be moved to facilitate cleaning and inspection. Equipment is to be dismounted to facilitate cleaning.	
4	The roof of the shelter is to be cleaned down with high-pressure water.	
5	Canvas areas are to be cleaned as tentage. Velcro and zip areas are to be carefully cleaned of all plant and insect matter (Refer Figure 113F-2).	
6	Air-conditioning and ventilation systems are to have filters removed and radiator fins air-blown clean. Ventilation systems are to be reverse air-blown with high-pressure air.	
7	Refer to Chapter 113 for detailed cleaning guidelines	

ANNEX G TO CHAPTER 113

CLEANING INSTRUCTIONS – LANDROVER 6X6 SPECIAL

FORCES SURVEILLANCE AND PATROL VEHICLE

1. This annex provides specific cleaning requirements for selected vehicles. Where there is a specific requirement or need to highlight particular problem areas detailed cleaning guides are provided as tables and figures in this annex.
2. The cleaning requirements that follow are in addition to those points for the Landrover 110 vehicle included in Chapter 113 of this publication.
3. Some vehicles may have additional, extensive authorised modifications that require further disassembly to complete the cleaning process.

Cleaning Instructions

4. The cleaning instructions for the Long Range Patrol Vehicle, as illustrated in Figure 113G–1, include the points detailed in Table 113G–1 and are indicative of the requirements for this variant of Landrover 110.



Figure 113G–1: Landrover 110 6X6 Long Range Patrol Vehicle

UNCONTROLLED IF PRINTED

113G - 2

Table 113G–1: Cleaning Instructions for Long Range Patrol Vehicle

<i>Serial</i>	<i>Comments or Tasks</i>	<i>Technical Time (hours)</i>
1	Remove all canvas or camouflage patterned covers. Thoroughly clean all canvas, CES and vehicle accessories.	
2	Remove and clean the winch rope. Clean the winch drum. Ensure propeller shafts and uni joints, and pillow block bearings are clean and free from dirt, dust, plant and insect material.	
3	Remove instrument cluster and clean dash wiring looms, and dash cavity with compressed air and by vacuuming. (Refer Figure 113G-2 below). Critically inspect dash and instrument panel wiring looms. If the individual wires in the loom are loosely bound by the outer covering (insulation tape, heat shrink or similar), the outer covering is to be removed and disposed of. For wiring looms that are bound by insulation tape, remove and dispose of the insulation tape.	0.5
4	Remove all batteries (including auxiliary batteries). (Refer Figure 113G-3 below). Clean battery cases, compartment, battery leads and frames to ensure no dirt, dust, plant or insect material remains. Ensure the reverse side of the auxiliary battery thermal insulation is cleaned and free from foreign material.	1.5
5	Ensure the upper surface and the blind hole cast in the top of the fuel sedimenters are clean and free from foreign material (Refer Figure 113G-4 below).	
6	Remove spare wheel assemblies from recesses in the cargo body. Ensure the spare wheel assemblies, and the compartments are clean and free from dirt, dust, plant and insect material.	
7	With all CES removed, ensure all stowage bins and liners are cleaned and compartments free from dust, dirt seed and plant material. Clean all rubber and weather seals and if damaged dispose of. Figure 113G-5 below refers to the cleaning requirements for the cargo body side bins. Figure 113G-6 below refers to the passenger's side under-seat storage bin.	
8	Ensure the hollow support frame housings on the corners of the cargo body are thoroughly cleaned by pressure washer.	
9	Remove the fuel filler cover plate from the right-hand side of the cargo body to expose the fuel filler to fuel cell connecting tubes. Ensure the cavity formed under the fuel filler cover panel is thoroughly cleaned with the pressure washer and no foreign material remains. (Refer Figure 113G-7 below)	
10	Thoroughly clean the area inside the body panelling, in the wheel arches, adjacent to the intermediate and rear wheel assemblies.	

UNCONTROLLED IF PRINTED

113G - 3

<i>Serial</i>	<i>Comments or Tasks</i>	<i>Technical Time (hours)</i>
	<p>Clean and flush the vertical rectangular hollow section at the centre of the wheel arches by flushing with clean water until free from foreign material.</p> <p>Thoroughly clean the rectangular hollow section brace (it has two holes formed in it) that connects the vertical wheel arch support to the vehicle chassis.</p> <p>Clean the horizontal support member (it has a single drilling formed in it) inside each individual wheel arch by flushing with clean water until it is free from foreign material.</p> <p>(Refer Figures 113G-8 and 113G-9 below)</p>	
11	<p>Ensure the chassis cross member (it has two holes formed in it) on the underside of the cargo body floor, immediately above the intermediate differential, is cleaned.</p> <p>They must be flushed with water until all foreign material is cleared from the hollow section of the cross member. (Refer Figure 113G-10 below)</p>	
12	<p>Clean the hollow support section of the side steps by flushing with water. (Refer Figure 113G-11 below)</p>	
13	<p>Ensure the hollow side sections of the cargo body tailgate are cleaned by flushing with clean water. (Refer Figure 113G-12 below)</p>	
14	<p>Clean the motorcycle carrier hollow support member, underneath the motorcycle carrier, by flushing with water until all foreign material is removed. (Refer Figure 113G-13 below)</p>	
15	<p>Ensure the rear machine gun pedestal mounting to the floor of the cargo body is cleaned and free from foreign material.</p>	
16	<p>If fitted, remove the tread plates from the top surface on the front mudguards to facilitate cleaning.</p>	0.5
17	<p>Remove all light lenses to ensure light housings are free of dirt, dust insect and plant material.</p> <p>Remove lenses, inserts or infra-red filters from any additional lighting to ensure housings are free of dirt, dust, plant and insect material.</p> <p>Dispose of damaged lights and lenses.</p>	2.5
18	<p>Ensure rear suspension rocker beam mount on chassis is clean and free of soil, plant and insect material.</p> <p>Flush leaf spring assemblies. (Refer Figure 113G-14 below)</p>	



Figure 113G-2: Landrover 110 6x6 Long Range Patrol Vehicle Instrument Cluster



Figure 113G-3: Landrover 110 6x6 Long Range Patrol Vehicle Battery



Figure 113G-4: Typical Landrover 110 6x6 Fuel Sedimentor



Figure 113G-5: Landrover 110 6x6 Long Range Patrol Vehicle Cargo Body Side Bins



Figure 113G-6: Landrover 110 6x6 Long Range Patrol Vehicle Passengers Side Under-seat Storage Bin



Figure 113G-7: Landrover 110 6x6 Long Range Patrol Vehicle Fuel Filler Cover Plate



Figure 113G–8: Landrover 110 6x6 Long Range Patrol Vehicle Cargo Body Wheel Arch Hollow Vertical Support



Figure 113G–9: Landrover 110 6x6 Long Range Patrol Vehicle Cargo Body Wheel Arch Horizontal Support Member



Figure 113G–10: Landrover 110 6x6 Long Range Patrol Vehicle Cargo Body Chassis Cross Member



Figure 113G–11: Landrover 110 6x6 Long Range Patrol Vehicle Side Steps



Figure 113G–12: Landrover 110 6x6 Long Range Patrol Vehicle Cargo Body Tailgate



Figure 113G-13: Landrover 110 6x6 Long Range Patrol Vehicle Motorcycle Carrier Support Member



Figure 113G-14: Landrover 110 6x6 Long Range Patrol Vehicle Rear Suspension Rocker Beam Mount to Chassis

ANNEX H TO CHAPTER 113

CLEANING INSTRUCTIONS – PERSONNEL CARRIER VARIANT

1. This annex provides specific cleaning requirements for selected vehicles. Where there is a specific requirement or need to highlight particular problem areas detailed cleaning guides are provided as tables and figures in this annex.
2. The cleaning requirements that follow are in addition to those points for the Landrover 110 vehicles that are included in Chapter 113.

Repair Module Cleaning Instructions

3. The cleaning instructions for the Personnel Carrier Module, as illustrated in Figure 113H–1 and 113H–2, include the points detailed in Table 113H–1.



Figure 113H–1 Personnel Carrier Module



Figure 113H–2: Personnel Carrier's Rear Interior

Table 113H-1: Cleaning Instructions for Personnel Carrier's Rear Interior

<i>Serial</i>	<i>Comments or Tasks</i>	<i>Technical Time (hours)</i>
1	Remove all CES, and workshop tools and equipment from the module.	
2	Remove all seating and frames to ensure there is no seed, soil or insect debris.	
3	Clean area underneath floor panel to ensure there is no dirt, dust, seed, and plant material.	
4	Refer to Chapter 113 for detailed cleaning guidelines.	

ANNEX I TO CHAPTER 113

CLEANING INSTRUCTIONS – AIR DEFENCE VEHICLE

1. This annex provides specific cleaning requirements for selected vehicles. Where there is a specific requirement or need to highlight particular problem areas detailed cleaning guides are provided as tables and figures in this annex.
2. The cleaning requirements that follow are in addition to those points for the Landrover 110 vehicle included in Chapter 113 of this publication.
3. The cleaning instructions for the Air Defence Vehicle, as illustrated in Figures 113I-1 to 113I-4, include the points detailed in Table 113I-1.



Figure 113I-1: Air Defence Vehicle Exterior



Figure 113I-2: Air Defence Vehicle Rear Compartments



Figure 113I-3: Air Defence Vehicle Rear Compartments



Figure 113I-4: Air Defence Vehicle Front

Table 113I-1: Cleaning Instructions for the Air Defence Vehicle

<i>Serial</i>	<i>Comments or Tasks</i>	<i>Technical Time (hours)</i>
1	Ensure forklift pockets, in the base of the shelter, are cleaned and free of dirt, dust, plant and insect material.	
2	The top is to be raised and the canvas cleaned as for tentage. Poles are to be wiped clean and the fold down area is to be cleaned of all soil, plant and insect material.	

UNCONTROLLED IF PRINTED

113I - 3

<i>Serial</i>	<i>Comments or Tasks</i>	<i>Technical Time (hours)</i>
3	All access panels are to be opened or removed to facilitate cleaning and inspection.	
4	Mounting frames fixed to the floor are to be moved to facilitate cleaning and inspection. Equipment is to be dismounted to facilitate cleaning.	
5	Clean all cage storage structures (refer Figure 113I-2).	
6	Remove rear passenger seat assemblies to facilitate cleaning. Seats and bases are to be re-fitted only after inspection.	
7	Do not remove seatbelt assemblies. Expose full length of seatbelt and clean by wiping with a dry rag.	
8	Clean the inside surface of the camouflage cover with a dry rag.	
9	Ensure all velcro is to be brushed and washed to ensure all seed, plant and soil material is removed.	
10	Clean canopy as per "Tarpaulins" in Chapter 113.	
11	Remove internal body inspection panel to clean cavity behind mounted seatbelt.	
12	Remove the plastic drain plugs from the underside of the compartments (if fitted).	
13	Clean inside the compartments with pressure washer.	
14	Refer to Chapter 113 for detailed cleaning guidelines.	

ANNEX J TO CHAPTER 113

CLEANING INSTRUCTIONS – ASSAULT PIONEER VEHICLE

1. This annex provides specific cleaning requirements for selected vehicles. Where there is a specific requirement or need to highlight particular problem areas detailed cleaning guides are provided as tables and figures in this annex
2. The cleaning requirements that follow are in addition to those points for the Landrover 110 vehicle included in Chapter 113 of this publication.
3. The cleaning instructions for the Assault Pioneer Vehicle, as illustrated in Figures 113J-1 to Fig 113J-9, include the points detailed in Table 113J-1.

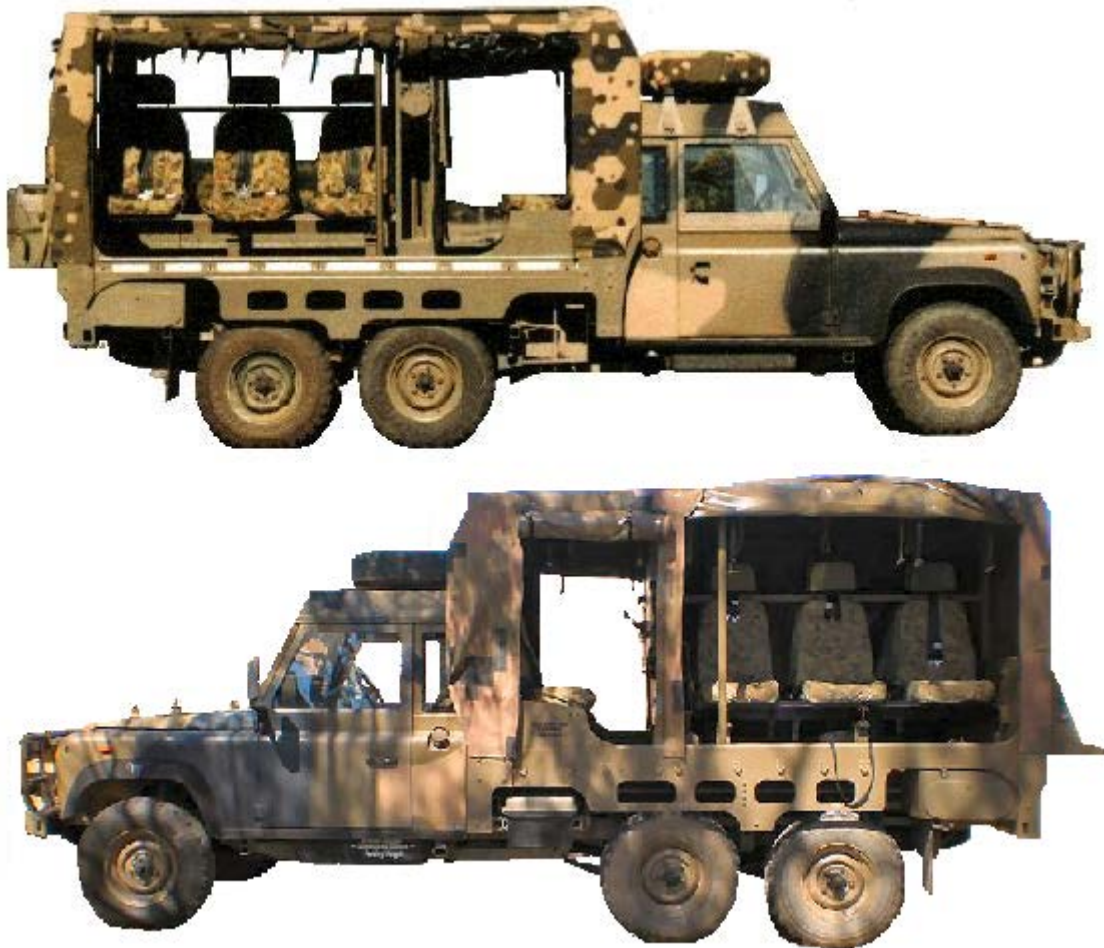


Figure 113J-1: Assault Pioneer Vehicle,



Figure 113J-2: Assault Pioneer Vehicle Frontal View

Table 113J-1: Cleaning Instructions for the Assault Pioneer Vehicle,

<i>Serial</i>	<i>Comments or Tasks</i>	<i>Technical Time (hours)</i>
1	Remove CES and clean.	
2	All access panels are to be opened or removed to facilitate cleaning and inspection.	
3	Open and clean side folding table including hinges and latches (refer Figure 113J-4).	
4	Clean all under seat recesses and ensure they are free of BRM (refer Figure 113J-5).	
5	Remove rear passenger seat assemblies to facilitate cleaning (refer Figure 113J-6). Seats and bases are to be re-fitted after inspection.	
6	Do not remove seatbelt assemblies. Expose full length of seatbelt and clean by wiping with a dry rag.	
7	Ensure the assembly housing is free from dirt, dust, insect and plant material.	
8	Clean the inside surface of the camouflage cover with a dry rag.	
9	Remove internal body inspection panel to clean cavity behind mounted seatbelt.	
10	Remove (if required) and clean the rubber seal fitted to the storage compartment doors (refer Figure 113J-7). Critically inspect the rubber seals and if damaged dispose of.	
11	Remove the plastic drain plugs from the underside of the compartment (if fitted).	
12	Clean inside the compartments with pressure washer.	
13	Clean the Gun Canopy Fitting ensuring that all BRM is removed (refer Figure 113J-8).	
14	Ensure all velcro is brushed and washed to ensure all seed, plant and	

UNCONTROLLED IF PRINTED

113J - 3

<i>Serial</i>	<i>Comments or Tasks</i>	<i>Technical Time (hours)</i>
	soil material is removed.	
15	Fully extend all forward compartment fittings and ensure they are free from dirt, dust, insect and plant material (refer Figures 113J-9 to 113J-11).	
16	Clean canopy as per "Tarpaulins" in Chapter 113.	
17	Clean roll cage structure.	
18	Refer to Chapter 113 for detailed cleaning guidelines.	



Figure 113J-3: Assault Pioneer Vehicle Rear Seating



Figure 113J-4: Assault Pioneer Vehicle Rear Storage Compartments (Left) and Rear Compartment Wall Fittings (Right)



Figure 113J-5: Assault Pioneer Vehicle Under Rear Seats (Left) and Head Side Pads (Right)



Figure 113J-6: Assault Pioneer Vehicle Forward Compartment

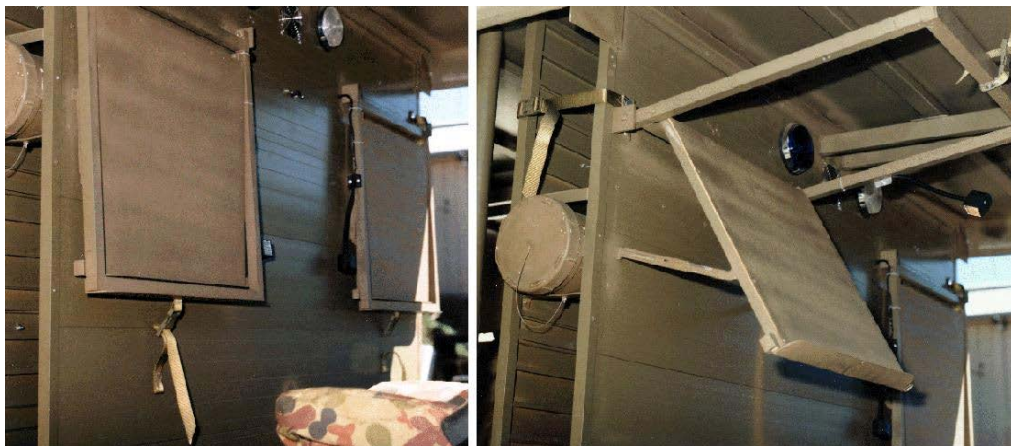


Figure 113J-7: Assault Pioneer Vehicle Forward Compartment Fittings



Figure 113J-8: Assault Pioneer Vehicle Forward Compartment Under Seat Stowage (Left) and Light Fittings (Right)

ANNEX K TO CHAPTER 113

CLEANING INSTRUCTIONS – CIRCUIT SWITCH ASSEMBLAGE

1. This annex provides specific cleaning requirements for selected vehicles. Where there is a specific requirement or need to highlight particular problem areas detailed cleaning guides are provided as tables and figures in this annex.
2. The cleaning requirements that follow are in addition to those points for the Landrover 110 vehicle included in Chapter 113 of this publication.
3. The cleaning instructions for the circuit switch assemblage, as illustrated in Figures 113K-1 to 113K-7, include the points detailed in Table 113K-1.



Figure 113K-1: Circuit Switch Assemblage



Figure 113K-2: Circuit Switch Assemblage Driver Side Stowage Compartments



Figure 113K-3: Circuit Switch Assemblage Passenger Side Stowage Compartments



Figure 113K-4: Circuit Switch Assemblage Rear Stowage Compartments

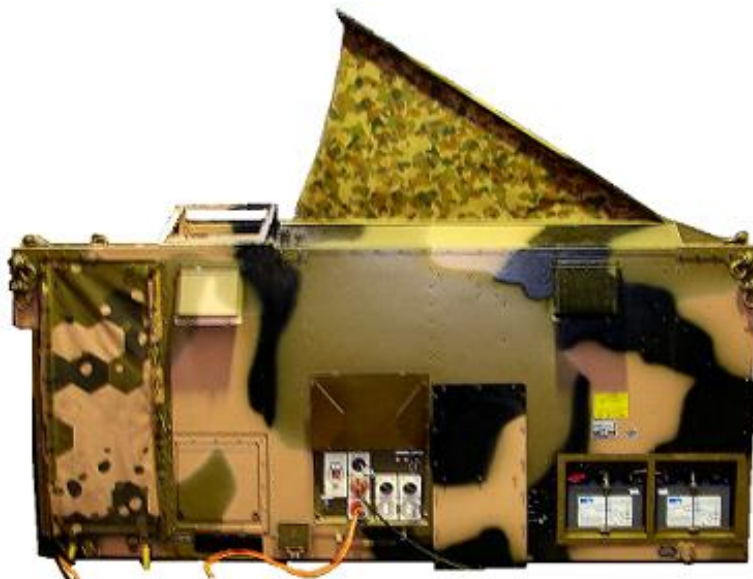


Figure 113K-5: Circuit Switch Assemblage Pod



Figure 113K-6: Circuit Switch Assemblage Battery Bay



Figure 113K-7: Circuit Switch Assemblage External Power Access Cover

Table 113K-1: Cleaning Instructions for the Circuit Switch Assemblage

CAUTION
ELECTRICAL COMPONENTS
 Do not use water or steam to clean any interiors areas of the Circuit Switch Assemblage's electrical compartments – Use air clean only and only under the supervision of a qualified technician.

Serial	Comments or Tasks	Technical Time (hours)
1	Remove all CES and clean individually. Where possible/practical do not replace into vehicle until inspected by DA.	
2	Do not use water or steam to clean any interiors areas of the Circuit Switch Assemblage's electrical compartments – Use air clean only and only under the supervision of a qualified technician.	
3	The pod/pallet is to be removed from the parent vehicle to facilitate cleaning and inspection (see Figure 113K-5).	
4	Ensure forklift pockets, in the base of the shelter, are cleaned and free of dirt, dust, plant and insect material.	

UNCONTROLLED IF PRINTED

113K - 4

<i>Serial</i>	<i>Comments or Tasks</i>	<i>Technical Time (hours)</i>
5	The top is to be raised and the canvas cleaned as for tentage. Poles are to be wiped clean and the fold down area is to be cleaned of all soil, plant and insect material.	
6	All access panels are to be opened or removed to facilitate cleaning and inspection.	
7	Air-conditioning and ventilation systems are to have filters removed and the radiator fins air-blown clean. Ventilation systems are to be air-blown with high-pressure air. Electronic equipment is to be dismantled to facilitate cleaning.	
8	Antenna masts are to be fully extended for cleaning.	
9	Guy lines and ropes are to be wiped clean to ensure they are free of all plant and insect matter. Antenna heads are to be washed down to remove all soil, plant and insect matter.	
10	Remove the batteries from the vehicle and clean (refer figure 113K-6).	
11	Clean the battery boxes and cradles and ensure they are free of dirt, dust, plant and insect material.	
12	Where possible/practical re-fit batteries after inspected by DA.	
13	The module external power access cover and consol is to be hand wiped only (refer Figure 113K-7).	
14	Refer to Chapter 113 for detailed cleaning guidelines.	

ANNEX L TO CHAPTER 113

CLEANING INSTRUCTIONS – TRUCK MORTAR VARIANT

1. This annex provides specific cleaning requirements for selected vehicles. Where there is a specific requirement or need to highlight particular problem areas detailed cleaning guides are provided as tables and figures in this annex.
2. The cleaning requirements that follow are in addition to those points for the Landrover 110 vehicle included in Chapter 113 of this publication.
3. The cleaning instructions for the Truck Mortar Vehicle, as illustrated in Figures 113L–1 to, 113L–6, include the points detailed in Table 113L–1.

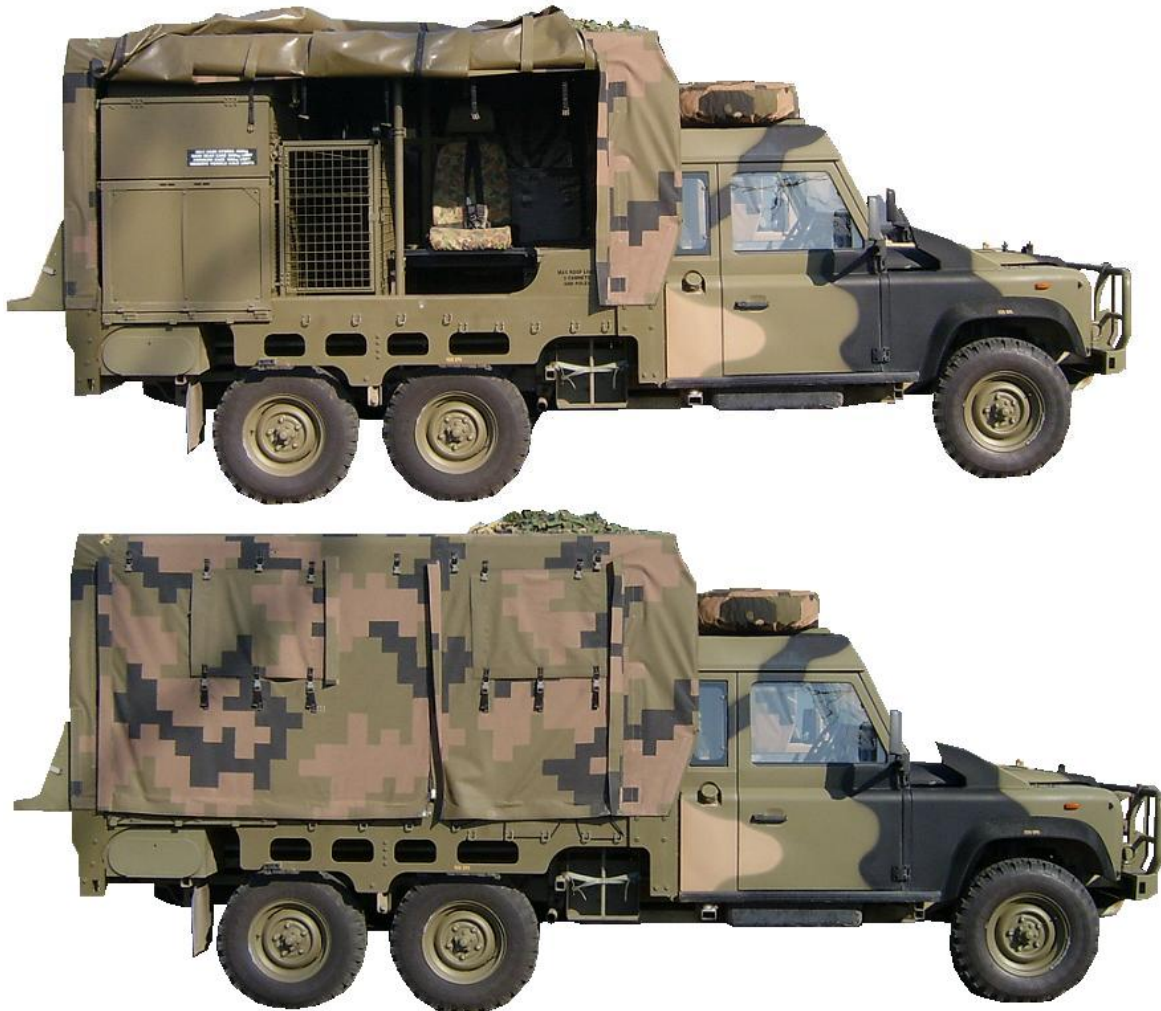


Figure 113L–1: Truck Mortar Vehicle

UNCONTROLLED IF PRINTED

113L - 2

Table 113L-1: Cleaning Instructions for the Truck Mortar Vehicle

<i>Serial</i>	<i>Comments or Tasks</i>	<i>Technical Time (hours)</i>
1	Ensure forklift pockets, in the base of the variant, are cleaned and free of dirt, dust, plant and insect material.	
2	All canvas is to be removed and the canvas cleaned as for tentage. Poles (if applicable) are to be wiped clean and the fold down area is to be cleaned of all soil, plant and insect material.	
3	All access panels are to be opened or removed to facilitate cleaning and inspection.	
4	Mounting frames fixed to the floor are to be moved to facilitate cleaning and inspection. Equipment is to be dismounted to facilitate cleaning.	
5	Remove rear passenger seat assemblies to facilitate cleaning. Seats and bases are to be re-fitted after inspection (refer Figure 113L-3 and 113L-4).	
6	Do not remove seatbelt assemblies. Expose full length of seatbelt and clean by wiping with a dry rag.	
7	Ensure the assembly housing is free from dirt, dust, insect and plant material.	
8	Clean the inside surface of the camouflage cover with a dry rag.	
9	Remove (if required) and clean the rubber seal fitted to the storage compartment bins (refer Figure 113L-6). Critically inspect the rubber seals and if damaged dispose of.	
10	Remove the plastic drain plugs from the underside of the compartments (if fitted).	
11	Clean inside the compartments with pressure washer.	
12	Ensure all velcro is to be brushed and washed to ensure all seed, plant and soil material is removed.	
13	Clean canopy as per "Tarpaulins" in Chapter 113.	
14	Clean all cage storage structures.	
15	Refer to Chapter 113 for detailed cleaning guidelines.	



Figure 113L-2: Truck Mortar Vehicle Rear



Figure 113L-3: Truck Mortar Vehicle Internal Areas



Figure 113L-4: Truck Mortar Vehicle Rear Controllers Chair



Figure 113L-5: Truck Mortar Vehicle Rear Compartments



Figure 113L-6: Truck Mortar Vehicle Internal Storage Bins

ANNEX M TO CHAPTER 113

CLEANING INSTRUCTIONS – ARTILLERY SAFETY VARIANT

1. This annex provides specific cleaning requirements for selected vehicles. Where there is a specific requirement or need to highlight particular problem areas detailed cleaning guides are provided as tables and figures in this annex.
2. The cleaning requirements that follow are in addition to those points for the Landrover 110 vehicle included in Chapter 113 of this publication.
3. The cleaning instructions for the Artillery Safety Vehicle, as illustrated in Figures 113M-1 to 113M-4, include the points detailed in Table 113M-1.



Figure 113M-1: Artillery Safety Vehicle

Table 113M-1: Cleaning Instructions for the Artillery Safety Vehicle

<i>Serial</i>	<i>Comments or Tasks</i>	<i>Technical Time (hours)</i>
1	Ensure forklift pockets, in the base of the shelter, are cleaned and free of dirt, dust, plant and insect material.	
2	The top is to be raised and the canvas cleaned as for tentage. Poles are to be wiped clean and the fold down area is to be cleaned of all soil, plant and insect material.	
3	All access panels are to be opened or removed to facilitate cleaning and inspection.	
4	Mounting frames fixed to the floor are to be moved to facilitate cleaning and inspection. Equipment is to be dismantled to facilitate cleaning.	
5	Clean all cage storage structures (refer Figure 113M-2).	
6	Remove rear passenger seat assemblies to facilitate cleaning. Seats and bases are to be re-fitted only after inspection (refer Figure 113M-3)	

UNCONTROLLED IF PRINTED

113M - 2

<i>Serial</i>	<i>Comments or Tasks</i>	<i>Technical Time (hours)</i>
	and 113M-4).	
7	Do not remove seatbelt assemblies. Expose full length of seatbelt and clean by wiping with a dry rag.	
8	Clean the inside surface of the camouflage cover with a dry rag.	
9	Ensure all velcro is to be brushed and washed to ensure all seed, plant and soil material is removed.	
10	Clean canopy as per "Tarpaulins" in Chapter 113.	
11	Remove internal body inspection panel to clean cavity behind mounted seatbelt.	
12	Remove the plastic drain plugs from the underside of the compartments (if fitted).	
13	Clean inside the compartments with pressure washer.	
14	Refer to Chapter 113 for detailed cleaning guidelines.	



Figure 113M-2: Artillery Safety Vehicle Rear Storage Cage



Figure 113M-3: Artillery Safety Vehicle Rear Internal Areas



Figure 113M-4: Artillery Safety Vehicle Rear Passenger Bench

ANNEX N TO CHAPTER 113

CLEANING INSTRUCTIONS – CREW-CAB VARIANT

1. This annex provides specific cleaning requirements for selected vehicles. Where there is a specific requirement or need to highlight particular problem areas detailed cleaning guides are provided as tables and figures in this annex.
2. The cleaning requirements that follow are in addition to those points for the Landrover 110 vehicle included in Chapter 113 of this publication.
3. The cleaning instructions for the Crew-cab Variant, as illustrated in Figures 113N-1 to 113N-5, include the points detailed in Table 113N-1.



Figure 113N-1: Landrover 6X6 Crew-cab



Figure 113N-2: Landrover 6X6 Crew-cab Rear



Figure 113N-3: Landrover 6X6 Crew-cab Front Seats



Figure 113N-4: Landrover 6X6 Crew-cab Rear Seat



Figure 113N-5: Landrover 6X6 Crew-cab Suspension

Table 113N-1: Cleaning Instructions for the Crew-cab Variant

<i>Serial</i>	<i>Comments or Tasks</i>	<i>Technical Time (hours)</i>
1	Ensure pockets, in the base of the shelter, are cleaned and free of dirt, dust, plant and insect material.	
2	Ensure the under cargo tray compartment is clean and free of BRM (refer Figure 113N-2).	
3	The inside cabin area is to be vacuumed and air-blown clean of all soil, plant and insect matter.	
4	Seat cushions are to be removed, inspected and damaged items are to be removed for disposal (refer Figures 113N-3 and 113N-4).	

UNCONTROLLED IF PRINTED

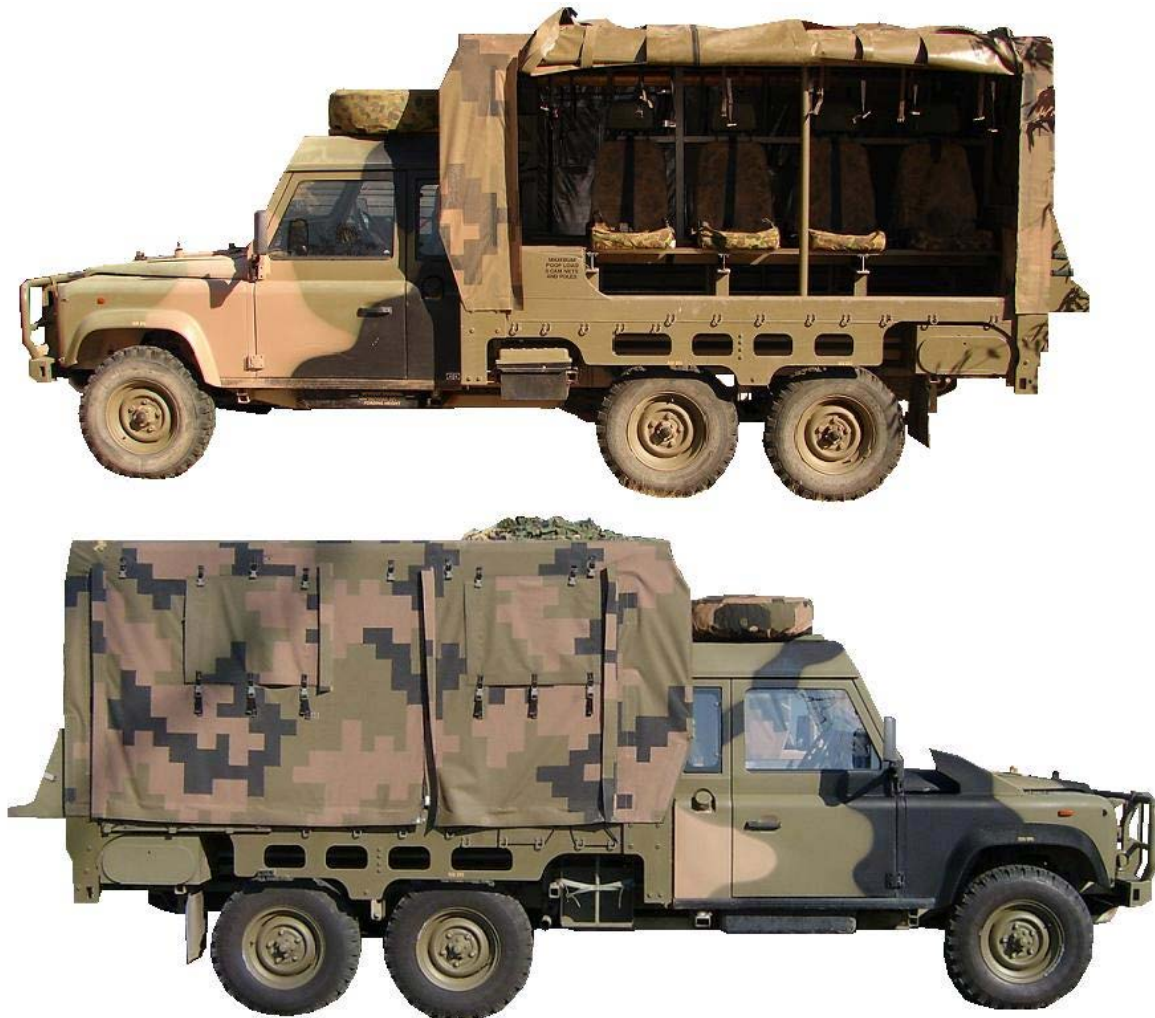
113N - 4

<i>Serial</i>	<i>Comments or Tasks</i>	<i>Technical Time (hours)</i>
5	All access panels are to be opened or removed to facilitate cleaning and inspection.	
6	Internal electronics are to be vacuumed, air-blown and brushed clean.	
7	Internal mounting racks that are fixed to the floor are to be moved to facilitate cleaning and inspection.	
8	Air-conditioning and ventilation systems are to have filters removed and the radiator fins air-blown clean.	
9	Ventilation systems are to be air-blown with high-pressure air. Electronic equipment is to be dismantled to facilitate cleaning.	
10	Ensure rear suspension rocker beam mounts on chassis are clean and free of soil, plant and insect material (refer Figure 113N-5).	
11	Cabin to be cleaned as per Chapter 113.	
12	Refer to Chapter 113 for detailed cleaning guidelines.	

ANNEX O TO CHAPTER 113

CLEANING INSTRUCTIONS – INFANTRY MOBILITY VARIANT

1. This annex provides specific cleaning requirements for selected vehicles. Where there is a specific requirement or need to highlight particular problem areas detailed cleaning guides are provided as tables and figures in this annex
2. The cleaning requirements that follow are in addition to those points for the Landrover 110 vehicle included in Chapter 113 of this publication.
3. The cleaning instructions for the Infantry Mobility variant, as illustrated in Figures 1130–2 to Fig 1130–7, include the points detailed in Table 1130–1.



1130–1: Infantry Mobility Variant,



1130-2: Infantry Mobility Variant Frontal



1130-3: Infantry Mobility Variant Rear

Table 1130-1: Cleaning Instructions for the Infantry Mobility Variant,

<i>Serial</i>	<i>Comments or Tasks</i>	<i>Technical Time (hours)</i>
1	Remove CES and clean (refer Figure 1130-3).	
2	All access panels are to be opened or removed to facilitate cleaning and inspection.	
3	Remove rear passenger seat assemblies to facilitate cleaning (refer Figures 1130-4 and 1130-5). Seats and bases are to be re-fitted after inspection.	
4	Clean all under seat recesses and ensure they are free of BRM (refer Figure 1130-6).	
5	Do not remove seatbelt assemblies. Expose full length of seatbelt and clean by wiping with a dry rag.	
6	Ensure the assembly housing is free from dirt, dust, insect and plant material.	

UNCONTROLLED IF PRINTED

113O - 3

<i>Serial</i>	<i>Comments or Tasks</i>	<i>Technical Time (hours)</i>
7	Clean the inside surface of the camouflage cover with a dry rag.	
8	Remove internal body inspection panel to clean cavity behind mounted seatbelt.	
9	Clean the tarpaulin holders on the cabin end wall of the rear area ensuring it is free of BRM (refer Figure 113O-7).	
10	Clean the anti slip mat on the floor on both sides of the rear compartment area ensuring it is free of BRM (refer Figure 113O-7).	
11	Clean inside the compartments with pressure washer.	
12	Clean the Gun Canopy Fitting ensuring that all BRM is removed (refer Figure 113O-8).	
13	Remove (if required) and clean the rubber seal fitted to the storage compartment doors (refer Figure 113O-9). Critically inspect the rubber seals and if damaged dispose of.	
14	Ensure all velcro is to be brushed and washed to ensure all seed, plant and soil material is removed.	
15	Clean canopy as per "Tarpaulins" in Chapter 113.	
16	Clean roll cage structure.	
17	Refer to Chapter 113 for detailed cleaning guidelines.	



113O-4: Infantry Mobility Variant Rear Seating



1130-5: Infantry Mobility Variant Rear Seating Floor Area (Left) and Roof Area (Right)



1130-6: Infantry Mobility Variant Under Seat Area



1130-7: Infantry Mobility Variant Wall Holders (Left) and Stowage Bin (Right)



1130–8: Infantry Mobility Variant Gun Canopy Fitting



1130–9: Infantry Mobility Variant Stowage Bins

ANNEX P TO CHAPTER 113

CLEANING INSTRUCTIONS – DIRECT FIRE WEAPONS VEHICLE

1. This annex provides specific cleaning requirements for selected vehicles. Where there is a specific requirement or need to highlight particular problem areas detailed cleaning guides are provided as tables and figures in this annex.
2. The cleaning requirements that follow are in addition to those points for the Landrover 110 vehicle included in Chapter 113 of this publication.
3. The cleaning instructions for the Direct Fire Weapons Vehicle, as illustrated in Figures 113P-1 to 113P-8, include the points detailed in Table 113P-1.



Figure 113P-1: Direct Fire Weapons Vehicle Side Views



Figure 113P-2: Direct Fire Weapons Vehicle Front and Rear Angle Views



Figure 113P-3: Direct Fire Weapons Vehicle Rear Seating



Figure 113P-4: Direct Fire Weapons Vehicle Rear Storage Cages



Figure 113P-5: Direct Fire Weapons Vehicle Forward Storage Cages



Figure 113P-6: Direct Fire Weapons Vehicle Compartment Lighting



Figure 113P-7: Direct Fire Weapons Vehicle Forward Storage Cages, Door Opened

Table 113P-1: Cleaning Instructions for the Direct Fire Weapons Vehicle

<i>Serial</i>	<i>Comments or Tasks</i>	<i>Technical Time (hours)</i>
1	Ensure forklift pockets, in the base of the variant, are cleaned and free of dirt, dust, plant and insect material.	
2	All canvas is to be removed and the canvas cleaned as for tentage (refer Figure 113P-1 and 113P-2). Poles (if applicable) are to be wiped clean and the fold down area is to be cleaned of all soil, plant and insect material.	
3	All access panels are to be opened or removed to facilitate cleaning and inspection.	
4	Mounting frames fixed to the floor are to be moved to facilitate cleaning and inspection. Equipment is to be dismantled to facilitate cleaning.	
5	Remove rear passenger seat assemblies to facilitate cleaning. Seats and bases are to be re-fitted after inspection (refer Figure 113P-3).	
6	Do not remove seatbelt assemblies. Expose full length of seatbelt and clean by wiping with a dry rag.	
7	Ensure the assembly housing is free from dirt, dust, insect and plant material.	
8	Clean the inside surface of the camouflage cover with a dry rag.	
9	Clean all cage storage structures (refer Figure 113P-4).	
10	Remove the plastic drain plugs from the underside of the compartments (if fitted).	
11	Clean inside the compartments with pressure washer.	
12	Ensure all velcro is to be brushed and washed to ensure all seed, plant and soil material is removed.	
13	Clean canopy as per "Tarpaulins" in Chapter 113.	
14	Clean all cage storage structures wooden panels, hinges and locks	

UNCONTROLLED IF PRINTED

113P - 5

<i>Serial</i>	<i>Comments or Tasks</i>	<i>Technical Time (hours)</i>
	(refer Figures 113P- 5 to 113P-7).	
15	Check around the light fitting for soil, plant and insect debris. Damaged light fittings should be removed and disposed (refer Figure 113P-6).	
16	Refer to Chapter 113 for detailed cleaning guidelines.	

ANNEX Q TO CHAPTER 113

CLEANING INSTRUCTIONS – FITTED FOR RADIO

1. This annex provides specific cleaning requirements for selected vehicles. Where there is a specific requirement or need to highlight particular problem areas detailed cleaning guides are provided as tables and figures in this annex.
2. The cleaning requirements that follow are in addition to those points for the Landrover 110 vehicle included in Chapter 113 of this publication.
3. The cleaning instructions for the Land Rover 6X6 Fitted for Radio, as illustrated in Figures 113Q-1 to 113Q-3, include the points detailed in Table 113Q-1.



Figure 113Q-1: Land Rover 6X6 Fitted for Radio



Figure 113Q-2: Land Rover 6X6 Fitted for Radio Battery Bay



Figure 113Q-3: Land Rover 6X6 Fitted for Radio Vehicle Power Couplings

Table 113Q-1: Cleaning Instructions for the Land Rover 6X6 Fitted for Radio

CAUTION
ELECTRICAL COMPONENTS
 Do not use water or steam to clean any interiors areas of the Circuit Switch Assemblage's electrical compartments – Use air clean only and only under the supervision of a qualified technician.

<i>Serial</i>	<i>Comments or Tasks</i>	<i>Technical Time (hours)</i>
1	Remove all CES and clean individually. Where possible/practical do not replace into vehicle until inspected by DA.	
2	The pod/pallet is to be removed from the parent vehicle to facilitate cleaning and inspection (see Figure 113Q-1).	

UNCONTROLLED IF PRINTED

113Q- 3

<i>Serial</i>	<i>Comments or Tasks</i>	<i>Technical Time (hours)</i>
3	Clean canopy as per "Tarpaulins" in Chapter 113.	
4	Ensure all velcro is to be brushed and washed to ensure all seed, plant and soil material is removed.	
5	Clean roll cage structure.	
6	Do not use water or steam to clean any interiors areas of the Fit for Radio Front Compartment's electrical compartments – Use air clean only and only under the supervision of a qualified technician	
7	Ensure forklift pockets, in the base of the shelter, are cleaned and free of dirt, dust, plant and insect material.	
8	The top is to be raised and the canvas cleaned as for tentage. Poles are to be wiped clean and the fold down area is to be cleaned of all soil, plant and insect material.	
9	All access panels are to be opened or removed to facilitate cleaning and inspection.	
10	Remove the batteries from the vehicle and clean (refer figure 113Q-2).	
11	Clean the battery boxes and cradles and ensure they are free of dirt, dust, plant and insect material.	
12	Where possible/practical re-fit batteries after inspection by DA.	
13	The module external power access cover and consol is to be hand wiped only (refer Figure 113Q-3).	
14	Refer to Chapter 113 for detailed cleaning guidelines.	

**ANNEX R TO CHAPTER 113
CLEANING CHECKLIST – LANDROVER 110 6x6 VEHICLE**

All serials may not be specific to all Landrover 110 6x6 vehicles

Vehicle Registration No:

<i>Serial</i>	<i>Description</i>	<i>Tick</i>
	Exterior	
1	CES removed and cleaned.	
2	All tool bins removed and cleaned.	
3	All other attachments, such as camouflage net carriers, removed and cleaned.	
4	Canopy and bows removed and cleaned.	
5	Hollow sections of the canopy bows cleaned by using flushing through the tubes with a pressure washer.	
6	Winch rope removed and cleaned.	
7	Winch drum removed and cleaned.	
8	Winch propeller shafts, uni joints, and pillow block bearing cleaned.	
9	Mudflaps removed and cleaned.	
10	Side flares on the front wheel arches removed and cleaned.	
11	Rubber seals on the doors, bonnet, and roof hatch cleaned or removed.	
12	Grill removed and radiator high-pressured air or manually cleaned.	
13	Radiator core cleaned.	
14	Critically inspect all light assemblies inspected and all compromised assemblies removed and cleaned.	
15	External rear view mirrors inspected and cleaned.	
10	Tread plates on top of front mudguards removed and cleaned.	

UNCONTROLLED IF PRINTED

113R-2

Serial	Description	Tick
	Drivers Cabin	
1	Floor and transmission tunnel mats removed and cleaned.	
2	Floor and transmission tunnel insulation pads removed and cleaned.	
3	Floor and transmission/bell housing tunnel access panels removed and the top surfaces of the transmission and the drive shaft cleaned.	
4	Driver and passenger seat assemblies removed and cleaned. (Seats and bases to be re-fitted after inspection).	
5	Do seatbelt assembly not removed. Full length of seatbelt exposed and cleaned by wiping with a dry rag.	
6	Access panels under cabin seats (including topside of fuel cell cleaned when cleaning.	
7	Inner door panels from both front doors removed and cleaned.	
8	Door cavity, including the window winding mechanism, pressure washed and cleaned	
9	Pressure wash window frame, channels and fillers pressure washed and cleaned.	
10	All door and window glass channels and fillers inspected and cleaned.	
	Seatbelts	
1	Seatbelt assembly not removed.	
2	Entire length of each seatbelt exposed and wiped with a dry rag.	
3	The assembly housing cleaned.	
4	The inside surface of the camouflage cover cleaned with a dry rag.	
5	Internal body inspection panel removed and the cavity behind mounted seatbelt cleaned.	
	Cargo Tray	
1	Headboard, tray sides, tailgate assembly, and the support posts removed and cleaned using pressure washer.	
2	Hollow sections of the support posts cleaned with high-pressure water.	
3	Fuel and water Jerry can carriers cleaned.	
4	Straps and buckles (including the loop areas of the straps, at the buckle end) cleaned.	

UNCONTROLLED IF PRINTED

113R-3

Serial	Description	Tick
5	Cargo body tray assembly cleaned with pressure washer.	
6	Seat sockets and cargo tie-down ring assemblies cleaned.	
7	Damaged or deformed cargo tray planks were removed from channels when foreign material could not be flushed from between planks and cargo body frame.	
8	Light fitting checked and cleaned.	
9	At least one entire tail-light fitting was removed and the rear cross member flushed out.	
Cargo Tray Toolbox		
1	Rubber seal fitted to the toolbox door removed and cleaned.	
2	The 'budget' key openings, in the toolbox cover, have been cleaned.	
3	The locking bar tube, on the inside of the door, inspected and cleaned with pressure washer.	
4	The plastic drain plugs from the underside of the toolboxes removed and cleaned.	
5	Inside the toolboxes cleaned with pressure washer.	
Engine Compartment		
1	The engine compartment and engine cleaned.	
2	All engine openings/breathers are taped or plugged to stop ingress of water.	
3	The starter motor and alternator are covered and taped to stop ingress of water.	
4	No high-pressure water jets were directed at any of the engine openings/breathers, or at any of the electrical/electronic components.	
5	The brake booster assembly and pedal pivot housing removed and cleaned.	
6	The clutch pedal pivot housing cover removed and cleaned.	
7	Heater assembly removed and heater core cleaned.	
8	Heater/ventilation fan housing cleaned.	
9	The air cleaner flexible line from the air plenum in the right-hand front mudguard assembly removed and cleaned.	

UNCONTROLLED IF PRINTED

113R-4

Serial	Description	Tick
	Harmonic Balancer	
1	Cast mouldings on the timing case, behind the harmonic balancer cleaned.	
	Fuel System	
1	The area between the fuel tank and the fuel tank skid plate, has been cleaned with extensive flushing with water using a flexible nozzle.	
2	The cavity between the skid plate and the underside of the fuel tank is thoroughly cleaned.	
3	The area on the top of both fuel tanks has been cleaned using the access openings in the seat base inside the cabin.	
4	The area around the fuel tank filler neck, inside the cabin vertical support and in the tank support arms have been cleaned.	
5	The upper surfaces, particularly the blind hole cast in the top of the fuel sedimenters, have been cleaned.	
	Battery Box	
1	The battery has been removed from the battery carrier in the engine compartment and the battery, battery carrier, frame, terminals and leads cleaned	
	Transmission	
1	All side of the transmission and transfer case assembly have been cleaned.	
2	All grease and dirt from the transmission top removed and cleaned.	
3	The cavities formed in top of the casting of the extension housing from the third differential to the front axle propeller shaft, in the area around the vacuum switch have been cleaned.	
	Chassis	
1	Any chassis members formed from rectangular hollow section galvanised steel with drillings that allow foreign material to collect inside the chassis member have been flushed until clear water is seen exiting.	
2	Hollow cross members, located above the intermediate and rear axle assemblies, adjacent to the shock absorber and rebound cable mounts cleaned by using pressure washer until clear water is seen exiting.	
3	The spring seat, where the spring is mounted to the axle assembly, has been cleaned.	
4	Rear suspension rocker beam mounts on chassis have been cleaned.	
	Universal Joints	
1	All grease that may accumulate on the universal joints removed and cleaned.	

UNCONTROLLED IF PRINTED

113R-5

<i>Serial</i>	<i>Description</i>	<i>Tick</i>
	Tarpaulins	
1	All tarpaulins have been given a brush down, brush scrubbing and hose cleaning, with particular attention to the seam areas and then hung so as not to contact the ground for drying.	
2	All ropes and universal dispatch straps have been extended to their full length and wiped or washed clean of all soil, plant and insect matter.	
3	Attachment points and fixtures and tension devices have been cleaned.	
4	All twigs, foliage, etc that have been removed from ropes.	
5	Velcro panels and seams (where fitted) have been brushed, washed and cleaned.	
6	All canvas bags have been turned inside out and cleaned.	
7	Where fitted, poles, knuckles and pegs have been high-pressure water cleaned and are free of insects.	
8	Unused tarpaulins that have not been used during the entire deployment, have been unrolled, brushed and swept clean to ensure no vermin or insect infestation and then subject to inspection.	
	Camouflage Nets	
1	All grass and debris have been removed.	
2	Heavily soiled camouflage nets have been further scrubbing and a dipped in an approved detergent/ disinfectant (one in 20 solution).	
3	Drying has been achieved by the hanging the camouflage net so that it did not come into contact with the ground.	
4	All nets have been inspected to ensure that all plant material is removed.	
5	All camouflage poles have been brushed or swept clean; and metal joiners have been removed, cleaned and inspected.	
	Tyres (New, Old and Spares)	
1	All tyres have been washed and scrubbed to remove all BRM.	
2	Cracked/ perished tyres have been assessed for disposal.	
3	All tyres have been treated with an approved residual insecticide after cleaning.	
4	All fitted tyres that were damaged have been replaced with new tyres.	
5	Used and fitted tyres on rims have been individually verified that the tyres are on rims, are inflated with beading sealed and that the tyres are clean, free of water and other BRM.	

UNCONTROLLED IF PRINTED

113R-6

<i>Serial</i>	<i>Description</i>	<i>Tick</i>
6	Tyres not fitted to rims have been stored in such a manner that water has not collected inside the tyre.	
7	The consignment contains a maximum of 8 tyres and is to be imported with an accompanying vehicle. The consignment contains more than a maximum of 8 tyres and will not be imported with an accompanying vehicle. (Delete whichever is not applicable)	

Signed Date:

Name: